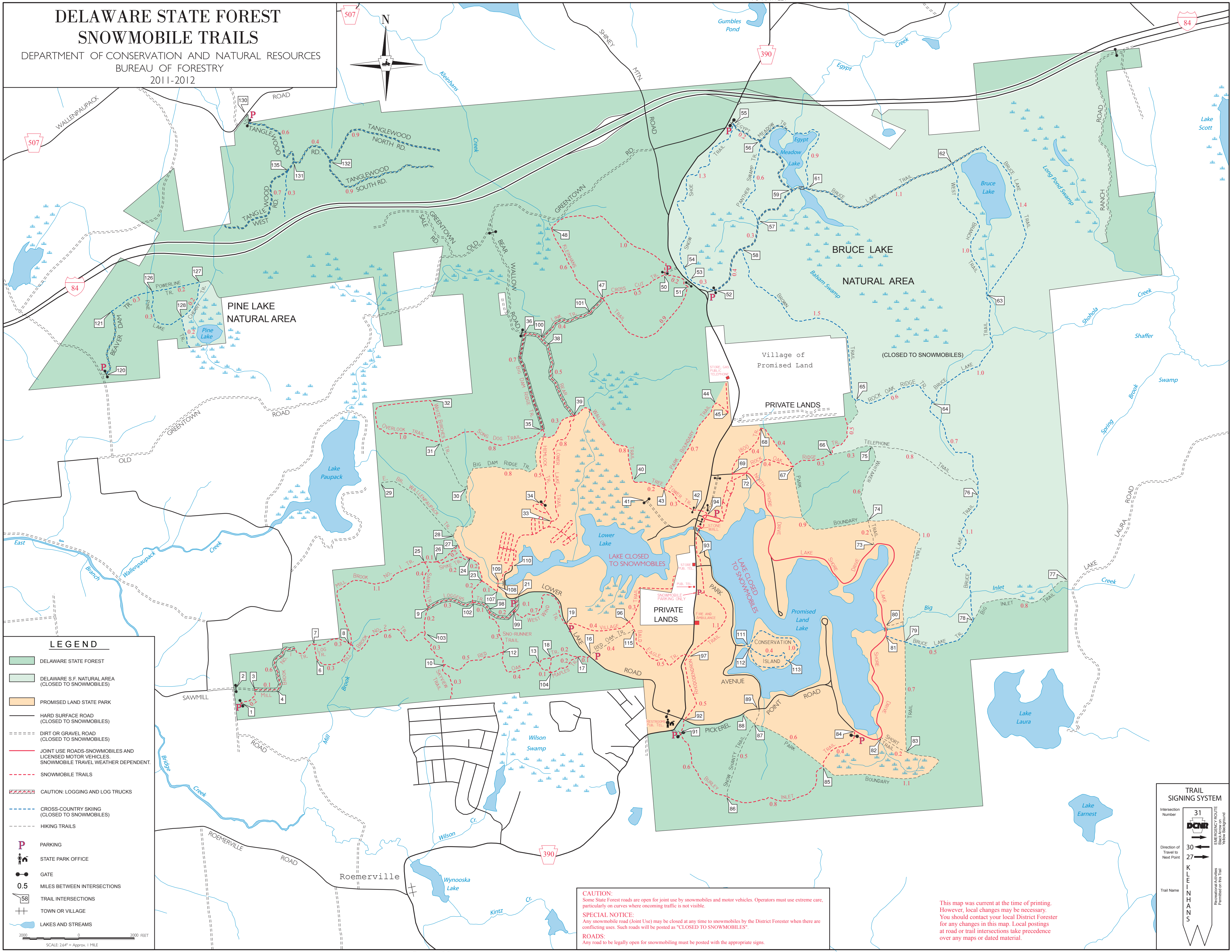
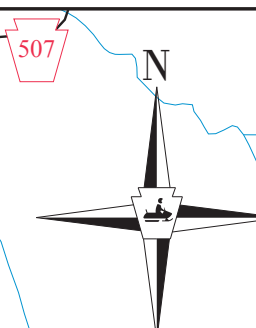


# DELAWARE STATE FOREST SNOWMOBILE TRAILS

DEPARTMENT OF CONSERVATION AND NATURAL RESOURCES  
BUREAU OF FORESTRY  
2011-2012



### LEGEND

- DELAWARE STATE FOREST
- DELAWARE S.F. NATURAL AREA (CLOSED TO SNOWMOBILES)
- PROMISED LAND STATE PARK
- HARD SURFACE ROAD (CLOSED TO SNOWMOBILES)
- DIRT OR GRAVEL ROAD (CLOSED TO SNOWMOBILES)
- JOINT USE ROADS-SNOWMOBILES AND LICENSED MOTOR VEHICLES. SNOWMOBILE TRAVEL WEATHER DEPENDENT.
- SNOWMOBILE TRAILS
- CAUTION: LOGGING AND LOG TRUCKS
- CROSS-COUNTRY SKIING (CLOSED TO SNOWMOBILES)
- HIKING TRAILS
- P PARKING
- S STATE PARK OFFICE
- GATE
- 0.5 MILES BETWEEN INTERSECTIONS
- 58 TRAIL INTERSECTIONS
- + TOWN OR VILLAGE
- LAKES AND STREAMS

SCALE: 2.64" = Approx. 1 MILE

**CAUTION:**  
Some State Forest roads are open for joint use by snowmobiles and motor vehicles. Operators must use extreme care, particularly on curves where oncoming traffic is not visible.

**SPECIAL NOTICE:**  
Any snowmobile road (Joint Use) may be closed at any time to snowmobiles by the District Forester when there are conflicting uses. Such roads will be posted as "CLOSED TO SNOWMOBILES".

**ROADS:**  
Any road to be legally open for snowmobiling must be posted with the appropriate signs.

This map was current at the time of printing. However, local changes may be necessary. You should contact your local District Forester for any changes in this map. Local postings at road or trail intersections take precedence over any maps or dated material.

### TRAIL SIGNING SYSTEM

Intersection Number: 31

Direction of Travel to Next Point: ←

Trail Name: KLEINHANS

EMERGENCY ROUTE: Black Arrow on Yellow Background

Recreational Activities Permitted on this Trail: